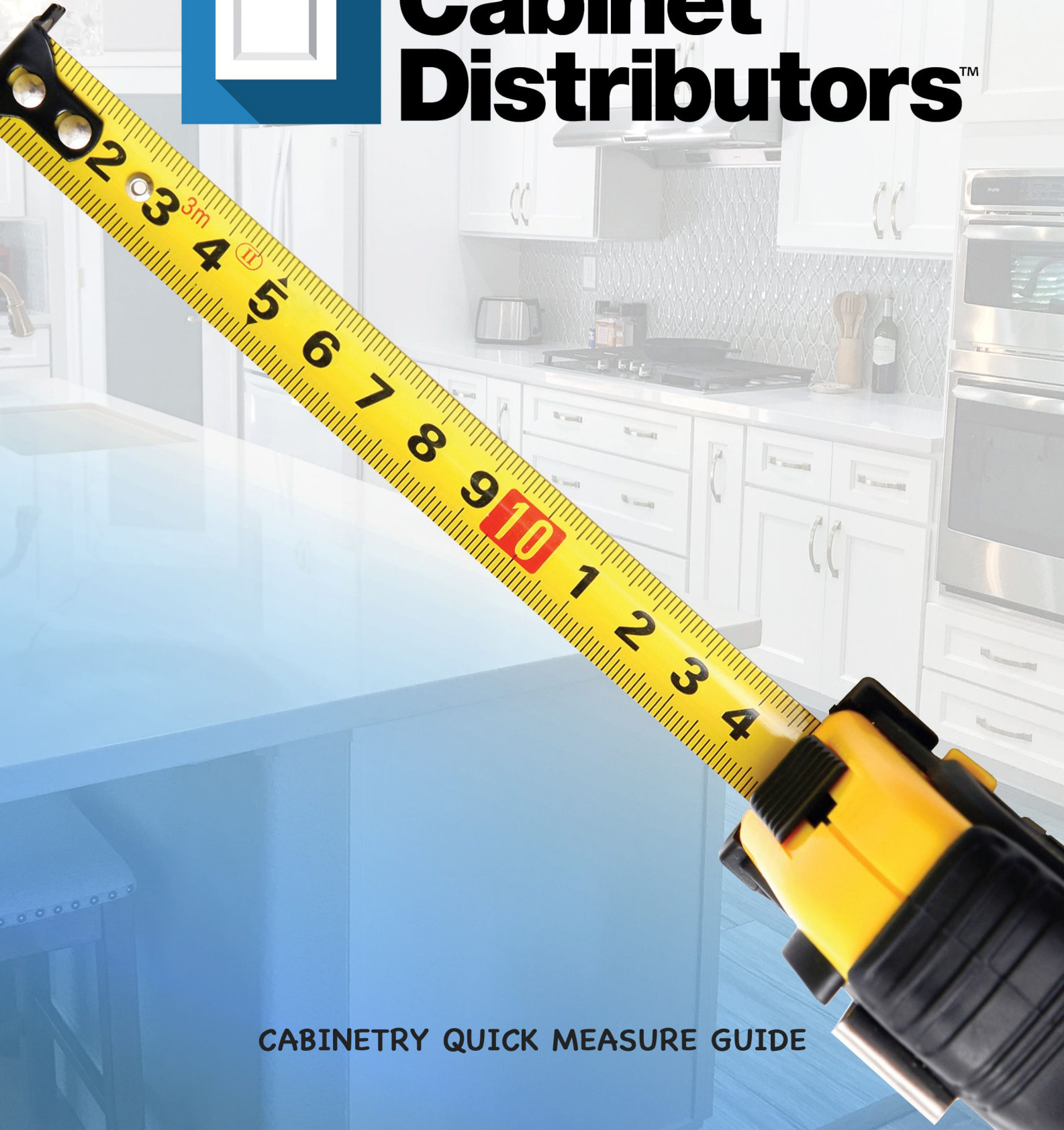


Kitchen Cabinet Distributors™



CABINETS QUICK MEASURE GUIDE

CABINETS QUICK MEASURE GUIDE

A QUICK START TO BEGIN YOUR KITCHEN CABINET DESIGN

SHAPE

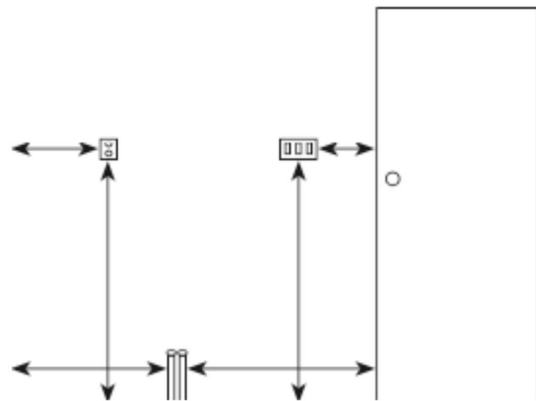
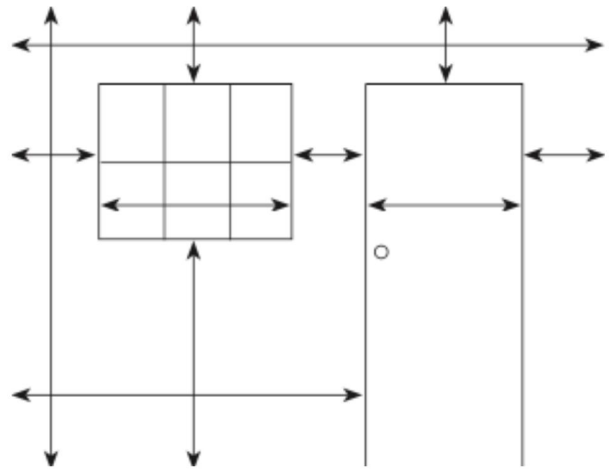
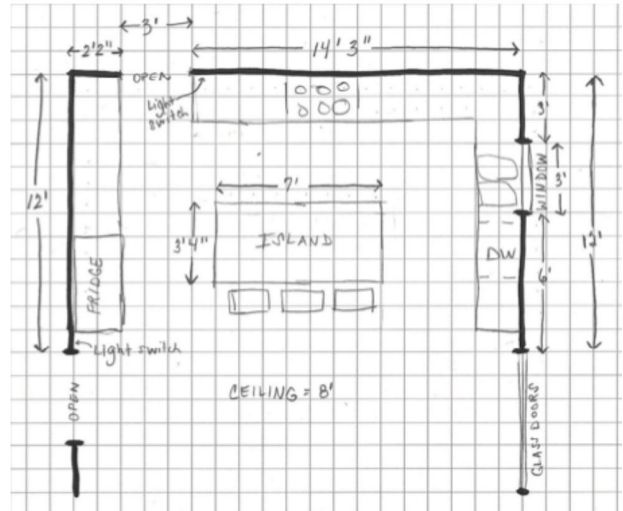
Draw your kitchen's basic shape. Be sure to include any major structural features or obstacles that may affect where cabinets can be installed. Graph paper is not necessary as long as the drawing is clear and accurate.

DETAILS

Mark the location of all windows and doors and any other openings in the space. Follow this action by marking the locations of existing plumbing, or the locations where plumbing will be moved. Notate the locations of power outlets and light switches. Then indicate locations for your refrigerator, stove, sink, etc.

MEASURE

- Measure each wall from corner to corner, as well as the ceiling height.
- Measure windows and doors from edge to edge, including casing. Measure the distance between corners of walls to the windows and doors. Measure from ceiling to each and from floor to each.
- Measure to plumbing, power outlets, and light switches.
- Measure all appliances (width, depth, and height).
- Mark all of these measurements on your drawing.



Photograph your kitchen from all angles! It helps the designer fully understand the space.





- No room entries, appliance doors, or cabinet doors should interfere with opening of appliances.
- Facing cabinets need enough room between them to have both doors opened simultaneously.
- Place a filler between the cabinet and the wall to ensure space to fully open the cabinet door.
- Wall cabinets are typically hung 18" above the countertop.
- An island should have at least 36" of space on all four sides.
- Leave room between the sink and cooktop for food preparation when they are adjacent another.
- Be sure that inward opening windows are not affected by sinks placed below it.
- House the dishwasher close to the sink to make loading and unloading easier.
- A sink or oven placed next to a wall limits workspace and disrupts work flow.
- A range should never be placed at the end of a run because of safety.



2114 Atlantic Avenue
Suite #106
Raleigh, NC 27604

600 Fallbrook Drive
Suite #100
Houston, TX 77038